

How to install VMware shutdown wizard

Required software:

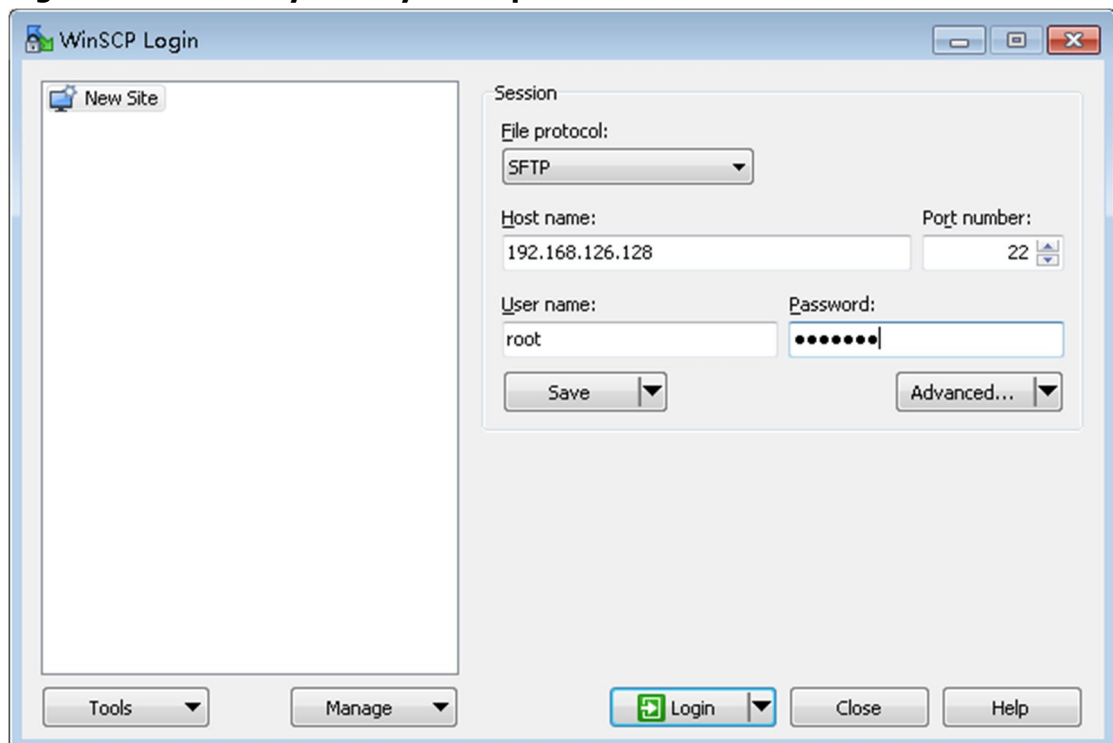
WinScp

File name for VMware Shutdown Wizard software:

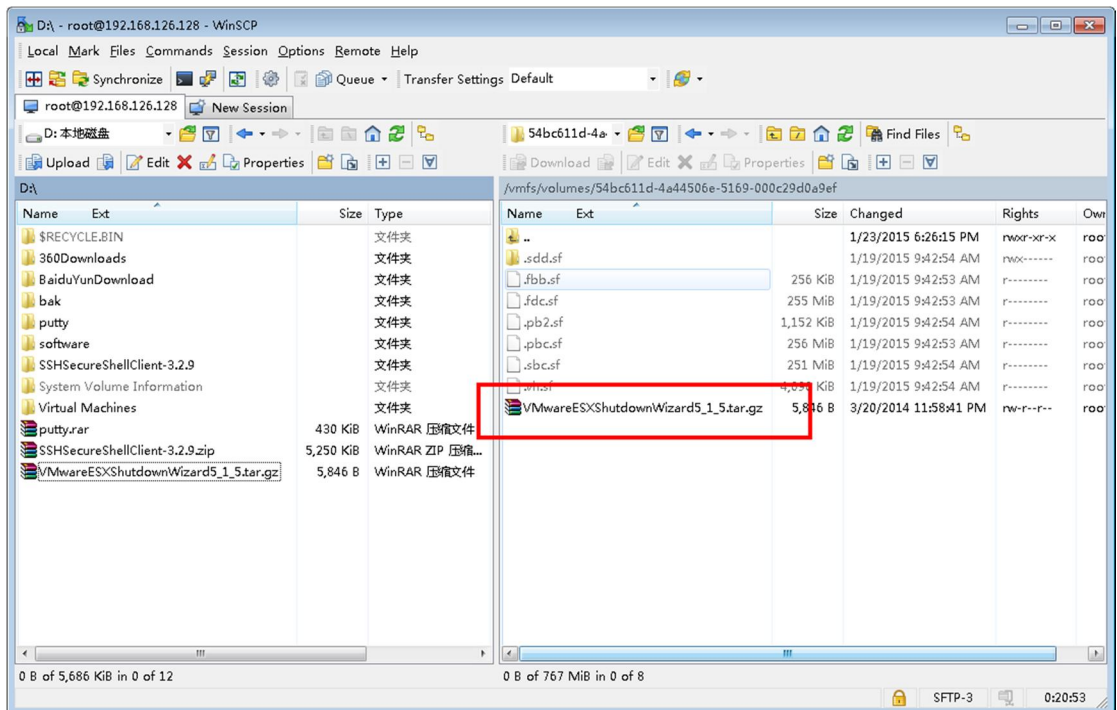
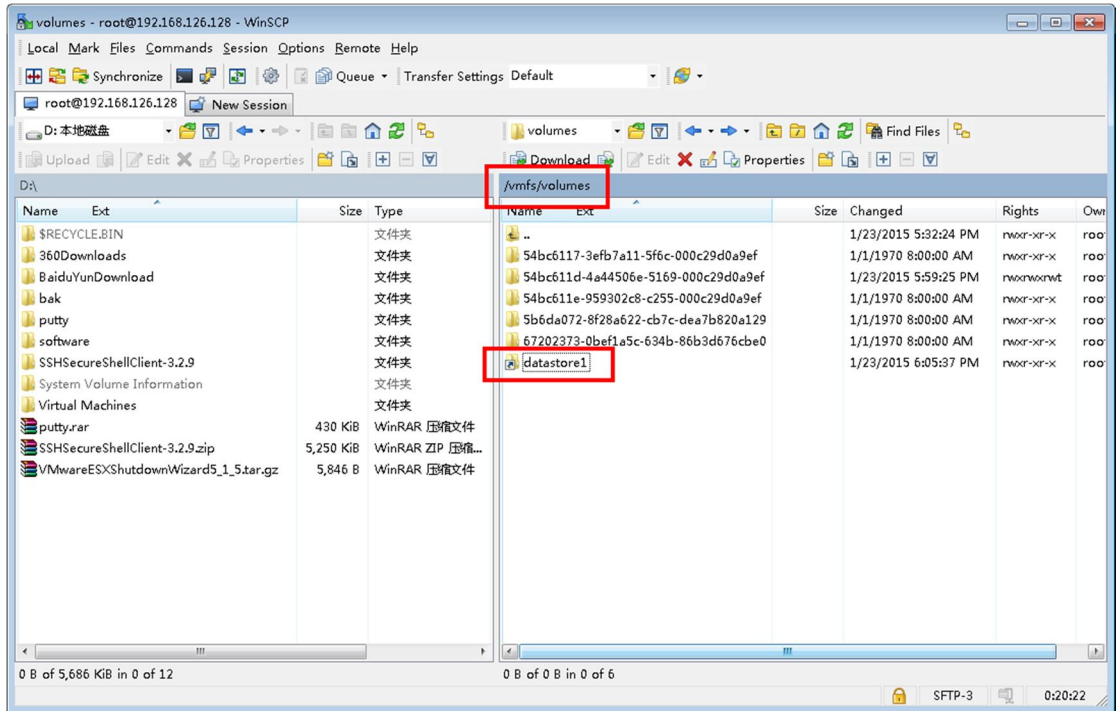
VMwareESXShutdownWizard5_1_5.tar.gz

1. Upload software to VMware ESX system and install

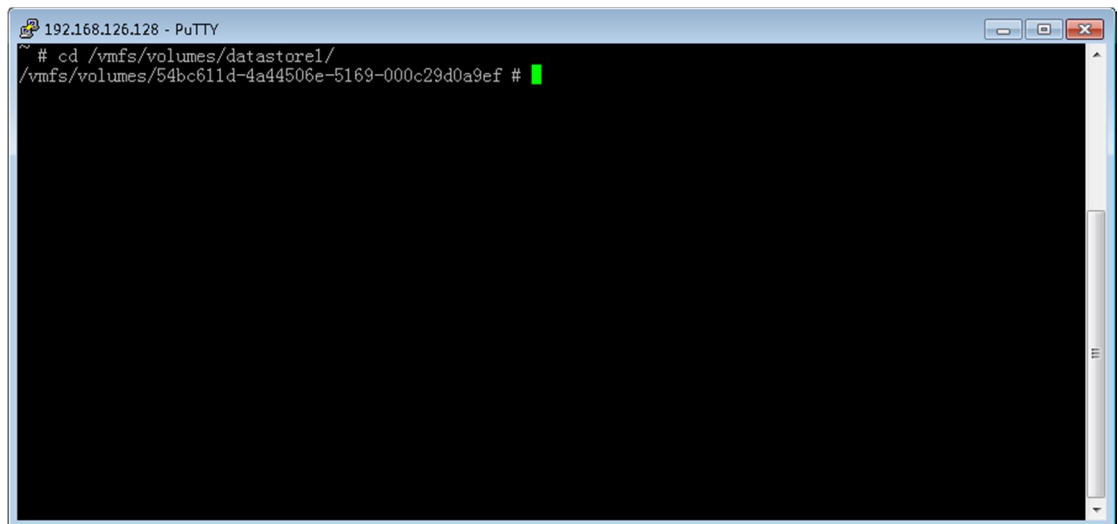
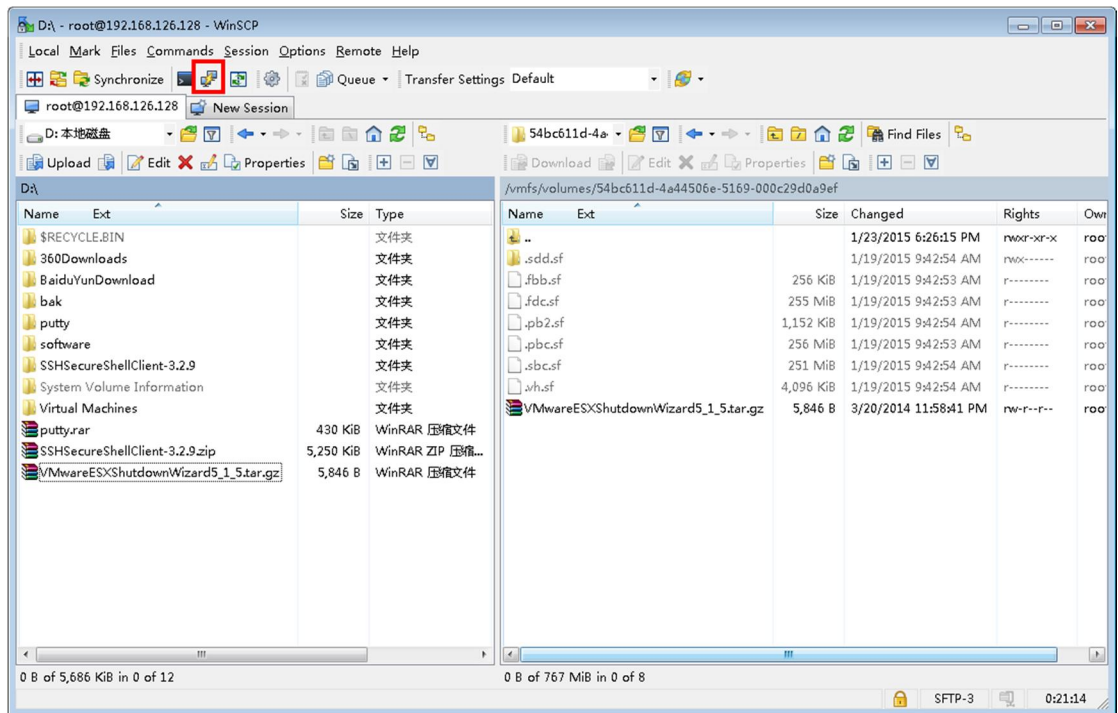
a. login VMware ESX system by WinScp.



b. Upload VMwareESXShutdownWizard5_1_5.tar.gz to "/vmfs/volumes/datastore1"



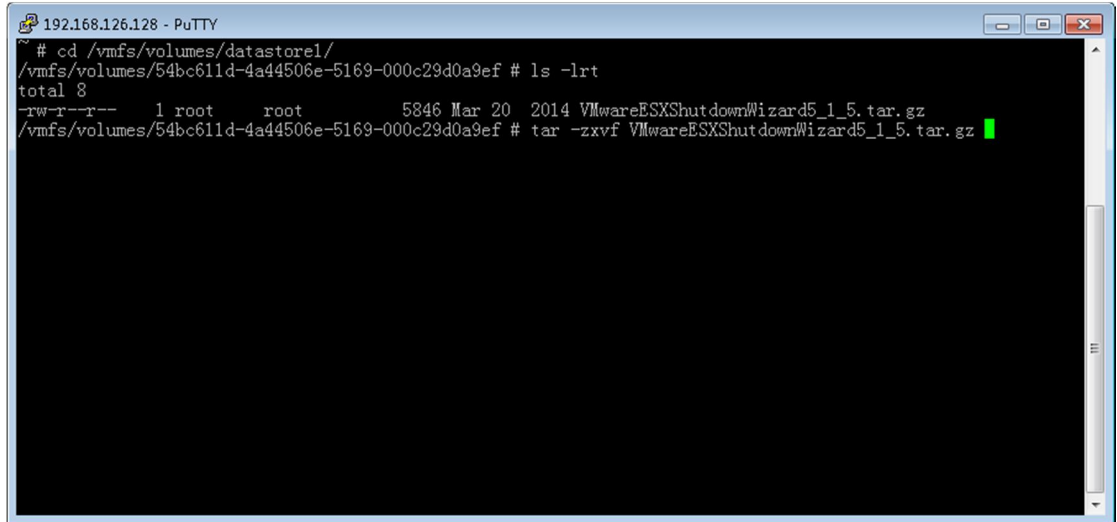
c. open putty and key in "cd /vmfs/volumes/datastore1"



Key in **"ls -lrt"** can see the

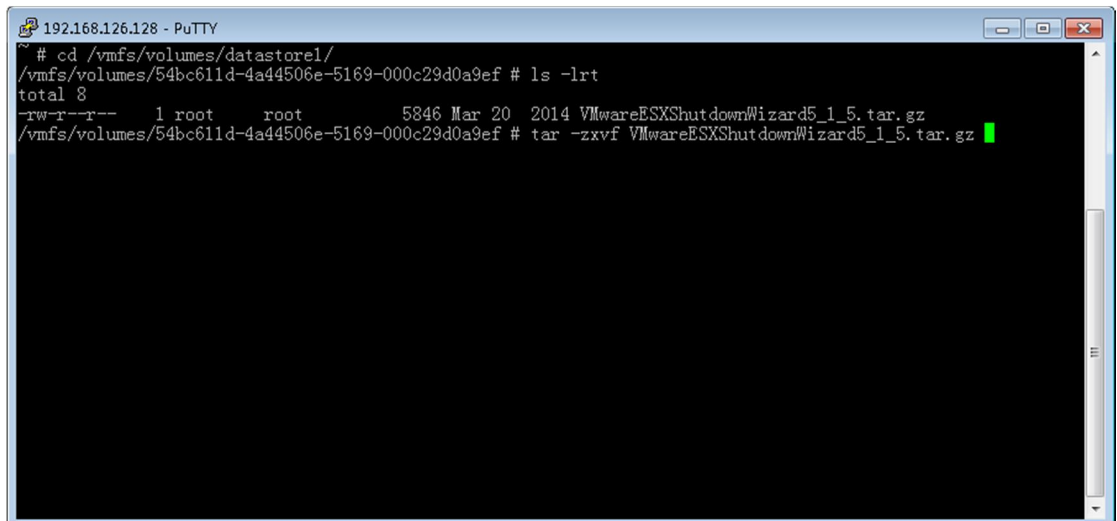
VMwareESXShutdownWizard5_1_5.tar.gz uploaded

just now



```
192.168.126.128 - PuTTY
# cd /vmfs/volumes/datastore1/
/vmfs/volumes/54bc611d-4a44506e-5169-000c29d0a9ef # ls -lrt
total 8
-rw-r--r-- 1 root root 5846 Mar 20 2014 VMwareESXShutdownWizard5_1_5.tar.gz
/vmfs/volumes/54bc611d-4a44506e-5169-000c29d0a9ef # tar -zxvf VMwareESXShutdownWizard5_1_5.tar.gz
```

d. Key in **"tar -zxvf VMwareESXShutdownWizard5_1_5.tar.gz"** to
unzip **VMwareESXShutdownWizard5_1_5.tar.gz**



```
192.168.126.128 - PuTTY
# cd /vmfs/volumes/datastore1/
/vmfs/volumes/54bc611d-4a44506e-5169-000c29d0a9ef # ls -lrt
total 8
-rw-r--r-- 1 root root 5846 Mar 20 2014 VMwareESXShutdownWizard5_1_5.tar.gz
/vmfs/volumes/54bc611d-4a44506e-5169-000c29d0a9ef # tar -zxvf VMwareESXShutdownWizard5_1_5.tar.gz
```

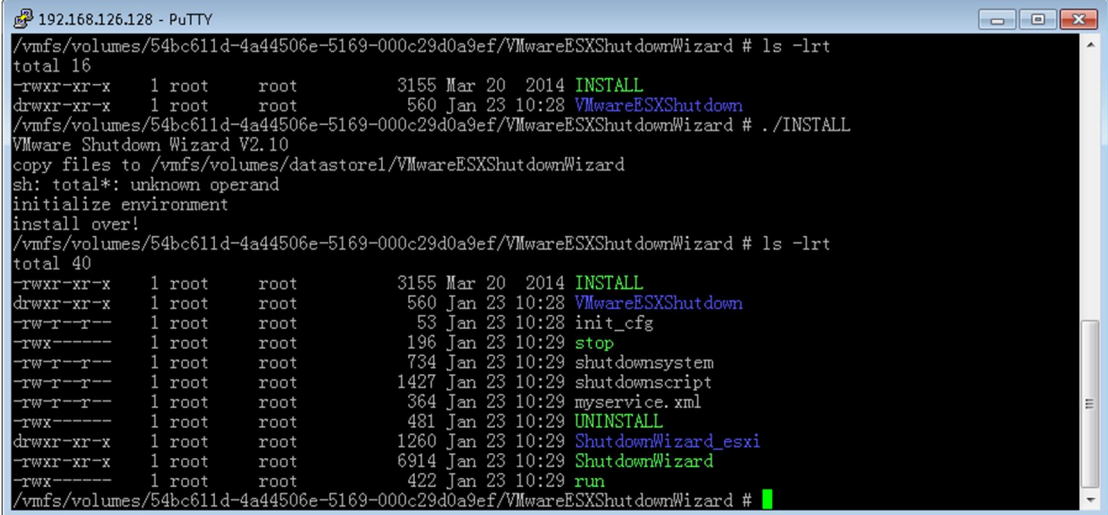
```
192.168.126.128 - PuTTY
# cd /vmfs/volumes/datastore1/
/vmfs/volumes/54bc611d-4a44506e-5169-000c29d0a9ef # ls -lrt
total 8
-rw-r--r-- 1 root root 5846 Mar 20 2014 VMwareESXShutdownWizard5_1_5.tar.gz
/vmfs/volumes/54bc611d-4a44506e-5169-000c29d0a9ef # tar -zxvf VMwareESXShutdownWizard5_1_5.tar.gz
VMwareESXShutdownWizard/
VMwareESXShutdownWizard/VMwareESXShutdown/
VMwareESXShutdownWizard/VMwareESXShutdown/Shut downWizard_esxi/
VMwareESXShutdownWizard/VMwareESXShutdown/Shut downWizard_esxi/Shut downWizard
VMwareESXShutdownWizard/VMwareESXShutdown/Shut downWizard_esxi/shut downsystem
VMwareESXShutdownWizard/VMwareESXShutdown/Shut downWizard_esxi/UNINSTALL
VMwareESXShutdownWizard/VMwareESXShutdown/Shut downWizard_esxi/shut downscript
VMwareESXShutdownWizard/VMwareESXShutdown/Shut downWizard_esxi/stop
VMwareESXShutdownWizard/VMwareESXShutdown/Shut downWizard_esxi/run
VMwareESXShutdownWizard/VMwareESXShutdown/Shut downWizard_esxi/mysevice.xml
VMwareESXShutdownWizard/VMwareESXShutdown/Shut downWizard_esx/
VMwareESXShutdownWizard/VMwareESXShutdown/Shut downWizard_esx/Shut downWizard
VMwareESXShutdownWizard/VMwareESXShutdown/Shut downWizard_esx/UNINSTALL
VMwareESXShutdownWizard/VMwareESXShutdown/Shut downWizard_esx/shut downscript
VMwareESXShutdownWizard/VMwareESXShutdown/Shut downWizard_esx/stop
VMwareESXShutdownWizard/VMwareESXShutdown/Shut downWizard_esx/shut downsystem
VMwareESXShutdownWizard/VMwareESXShutdown/Shut downWizard_esx/run
VMwareESXShutdownWizard/INSTALL
/vmfs/volumes/54bc611d-4a44506e-5169-000c29d0a9ef #
```

- e. Key in **"cd VMwareESXShutdownWizard"** to access the VMwareESXShutdownWizard catalogue. Then run **"./INSTALL"** to install

```
192.168.126.128 - PuTTY
/vmfs/volumes/54bc611d-4a44506e-5169-000c29d0a9ef # cd VMwareESXShutdownWizard/
/vmfs/volumes/54bc611d-4a44506e-5169-000c29d0a9ef/VMwareESXShutdownWizard # ls -lrt
total 16
-rwxr-xr-x 1 root root 3155 Mar 20 2014 INSTALL
drwxr-xr-x 1 root root 560 Jan 23 10:28 VMwareESXShutdown
/vmfs/volumes/54bc611d-4a44506e-5169-000c29d0a9ef/VMwareESXShutdownWizard #
```

```
192.168.126.128 - PuTTY
/vmfs/volumes/54bc611d-4a44506e-5169-000c29d0a9ef # cd VMwareESXShutdownWizard/
/vmfs/volumes/54bc611d-4a44506e-5169-000c29d0a9ef/VMwareESXShutdownWizard # ls -lrt
total 16
-rwxr-xr-x 1 root root 3155 Mar 20 2014 INSTALL
drwxr-xr-x 1 root root 560 Jan 23 10:28 VMwareESXShutdown
/vmfs/volumes/54bc611d-4a44506e-5169-000c29d0a9ef/VMwareESXShutdownWizard # ./INSTALL
VMware Shutdown Wizard V2.10
copy files to /vmfs/volumes/datastore1/VMwareESXShutdownWizard
sh: total*: unknown operand
initialize environment
install over!
/vmfs/volumes/54bc611d-4a44506e-5169-000c29d0a9ef/VMwareESXShutdownWizard #
```

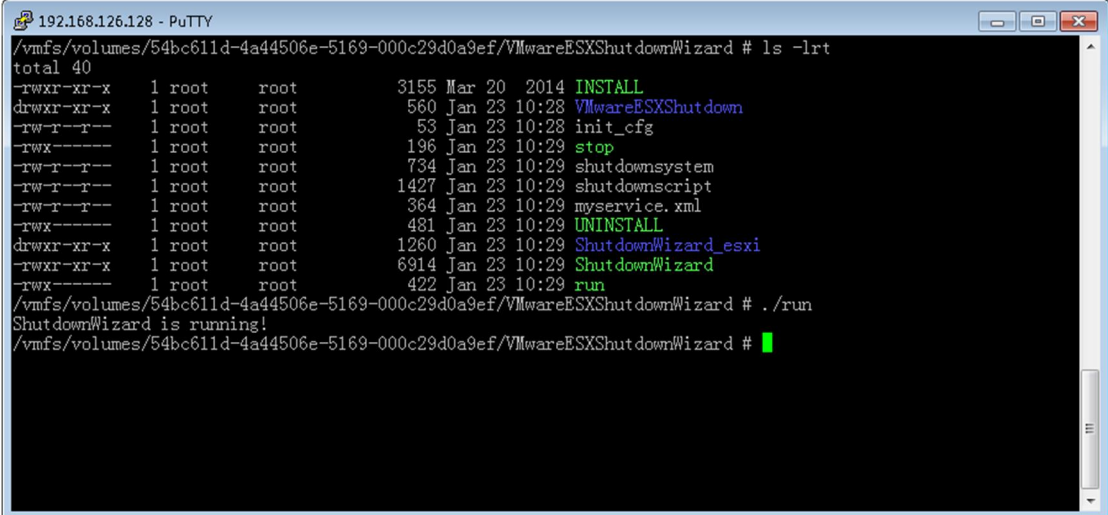
- f. After install, the default path is set to
"/vmfs/volumes/datastore1/VMwareESXShutdownWizard"



```
192.168.126.128 - PuTTY
/vmfs/volumes/54bc611d-4a44506e-5169-000c29d0a9ef/VMwareESXShutdownWizard # ls -lrt
total 16
-rwxr-xr-x  1 root  root    3155 Mar 20  2014  INSTALL
drwxr-xr-x  1 root  root     560 Jan 23  10:28  VMwareESXShutdown
/vmfs/volumes/54bc611d-4a44506e-5169-000c29d0a9ef/VMwareESXShutdownWizard # ./INSTALL
VMware Shutdown Wizard V2.10
copy files to /vmfs/volumes/datastore1/VMwareESXShutdownWizard
sh: total*: unknown operand
initialize environment
install over!
/vmfs/volumes/54bc611d-4a44506e-5169-000c29d0a9ef/VMwareESXShutdownWizard # ls -lrt
total 40
-rwxr-xr-x  1 root  root    3155 Mar 20  2014  INSTALL
drwxr-xr-x  1 root  root     560 Jan 23  10:28  VMwareESXShutdown
-rw-r--r--  1 root  root     53 Jan 23  10:28  init_cfg
-rwx-----  1 root  root    196 Jan 23  10:29  stop
-rw-r--r--  1 root  root    734 Jan 23  10:29  shutdownsystem
-rw-r--r--  1 root  root   1427 Jan 23  10:29  shutdownscript
-rw-r--r--  1 root  root    364 Jan 23  10:29  myservice.xml
-rwx-----  1 root  root    481 Jan 23  10:29  UNINSTALL
drwxr-xr-x  1 root  root    1260 Jan 23  10:29  ShutdownWizard_esxi
-rwxr-xr-x  1 root  root    6914 Jan 23  10:29  ShutdownWizard
-rwx-----  1 root  root     422 Jan 23  10:29  run
/vmfs/volumes/54bc611d-4a44506e-5169-000c29d0a9ef/VMwareESXShutdownWizard #
```

2. run VMwareESXShutdownWizard

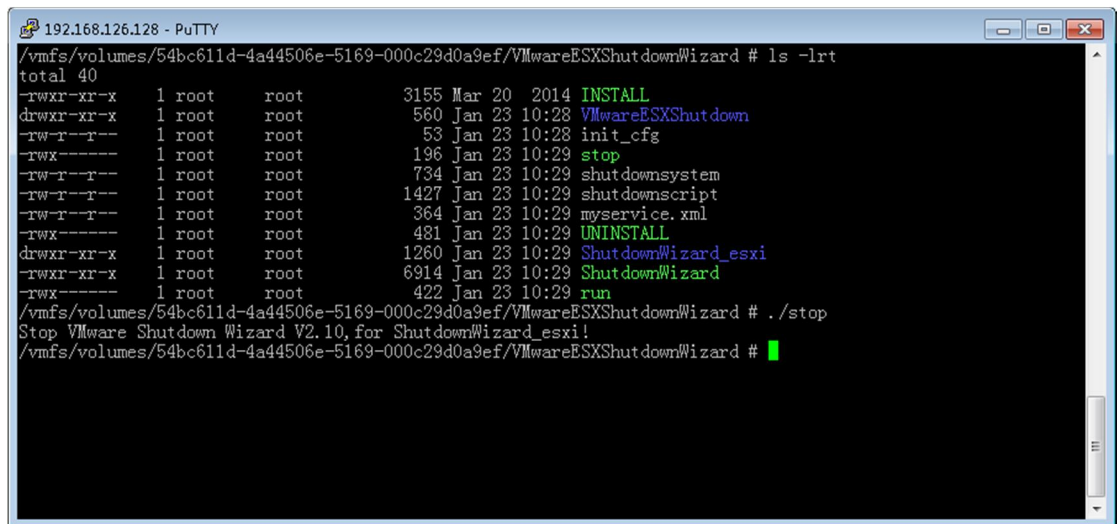
- a. key in "cd /vmfs/volumes/datastore1/VMwareESXShutdownWizard"
b. key in "./run"



```
192.168.126.128 - PuTTY
/vmfs/volumes/54bc611d-4a44506e-5169-000c29d0a9ef/VMwareESXShutdownWizard # ls -lrt
total 40
-rwxr-xr-x  1 root  root    3155 Mar 20  2014  INSTALL
drwxr-xr-x  1 root  root     560 Jan 23  10:28  VMwareESXShutdown
-rw-r--r--  1 root  root     53 Jan 23  10:28  init_cfg
-rwx-----  1 root  root    196 Jan 23  10:29  stop
-rw-r--r--  1 root  root    734 Jan 23  10:29  shutdownsystem
-rw-r--r--  1 root  root   1427 Jan 23  10:29  shutdownscript
-rw-r--r--  1 root  root    364 Jan 23  10:29  myservice.xml
-rwx-----  1 root  root    481 Jan 23  10:29  UNINSTALL
drwxr-xr-x  1 root  root    1260 Jan 23  10:29  ShutdownWizard_esxi
-rwxr-xr-x  1 root  root    6914 Jan 23  10:29  ShutdownWizard
-rwx-----  1 root  root     422 Jan 23  10:29  run
/vmfs/volumes/54bc611d-4a44506e-5169-000c29d0a9ef/VMwareESXShutdownWizard # ./run
ShutdownWizard is running!
/vmfs/volumes/54bc611d-4a44506e-5169-000c29d0a9ef/VMwareESXShutdownWizard #
```

3. stop VMwareESXShutdownWizard

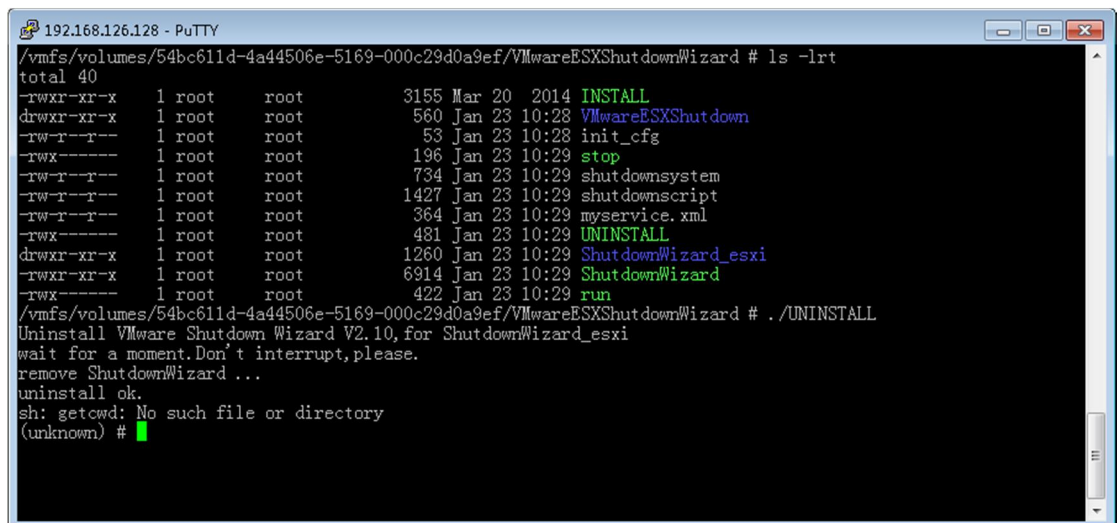
- key in `cd /vmfs/volumes/datastore1/VMwareESXShutdownWizard`
- key in `./stop`



```
192.168.126.128 - PuTTY
/vmfs/volumes/54bc611d-4a44506e-5169-000c29d0a9ef/VMwareESXShutdownWizard # ls -lrt
total 40
-rwxr-xr-x 1 root root 3155 Mar 20 2014 INSTALL
drwxr-xr-x 1 root root 560 Jan 23 10:28 VMwareESXShutdown
-rw-r--r-- 1 root root 53 Jan 23 10:28 init_cfg
-rwx----- 1 root root 196 Jan 23 10:29 stop
-rw-r--r-- 1 root root 734 Jan 23 10:29 shutdownsystem
-rw-r--r-- 1 root root 1427 Jan 23 10:29 shutdownscript
-rw-r--r-- 1 root root 364 Jan 23 10:29 myservice.xml
-rwx----- 1 root root 481 Jan 23 10:29 UNINSTALL
drwxr-xr-x 1 root root 1260 Jan 23 10:29 ShutdownWizard_esxi
-rwxr-xr-x 1 root root 6914 Jan 23 10:29 ShutdownWizard
-rwx----- 1 root root 422 Jan 23 10:29 run
/vmfs/volumes/54bc611d-4a44506e-5169-000c29d0a9ef/VMwareESXShutdownWizard # ./stop
Stop VMware Shutdown Wizard V2.10, for ShutdownWizard_esxi!
/vmfs/volumes/54bc611d-4a44506e-5169-000c29d0a9ef/VMwareESXShutdownWizard #
```

4. Uninstall VMwareESXShutdownWizard

- key in `cd /vmfs/volumes/datastore1/VMwareESXShutdownWizard`
- key in `./UNINSTALL`



```
192.168.126.128 - PuTTY
/vmfs/volumes/54bc611d-4a44506e-5169-000c29d0a9ef/VMwareESXShutdownWizard # ls -lrt
total 40
-rwxr-xr-x 1 root root 3155 Mar 20 2014 INSTALL
drwxr-xr-x 1 root root 560 Jan 23 10:28 VMwareESXShutdown
-rw-r--r-- 1 root root 53 Jan 23 10:28 init_cfg
-rwx----- 1 root root 196 Jan 23 10:29 stop
-rw-r--r-- 1 root root 734 Jan 23 10:29 shutdownsystem
-rw-r--r-- 1 root root 1427 Jan 23 10:29 shutdownscript
-rw-r--r-- 1 root root 364 Jan 23 10:29 myservice.xml
-rwx----- 1 root root 481 Jan 23 10:29 UNINSTALL
drwxr-xr-x 1 root root 1260 Jan 23 10:29 ShutdownWizard_esxi
-rwxr-xr-x 1 root root 6914 Jan 23 10:29 ShutdownWizard
-rwx----- 1 root root 422 Jan 23 10:29 run
/vmfs/volumes/54bc611d-4a44506e-5169-000c29d0a9ef/VMwareESXShutdownWizard # ./UNINSTALL
Uninstall VMware Shutdown Wizard V2.10, for ShutdownWizard_esxi
wait for a moment. Don't interrupt, please.
remove ShutdownWizard...
uninstall ok.
sh: getcwd: No such file or directory
(unknown) #
```